



Messprogramm
ETIBS® - Optischer Bohrlochscanner
ABF - Akustisches Bohrlochfernsehen

Erkundungsobjekt
TB Lütsche

Auftraggeber: BOG
Bohrung: BK-2/26
Ort: Geratal
Auftragsnummer: e-3756

Teufenmaßstab
1:10

Koordinaten


Rechtswert:
Hochwert:
Höhe ü. NN:

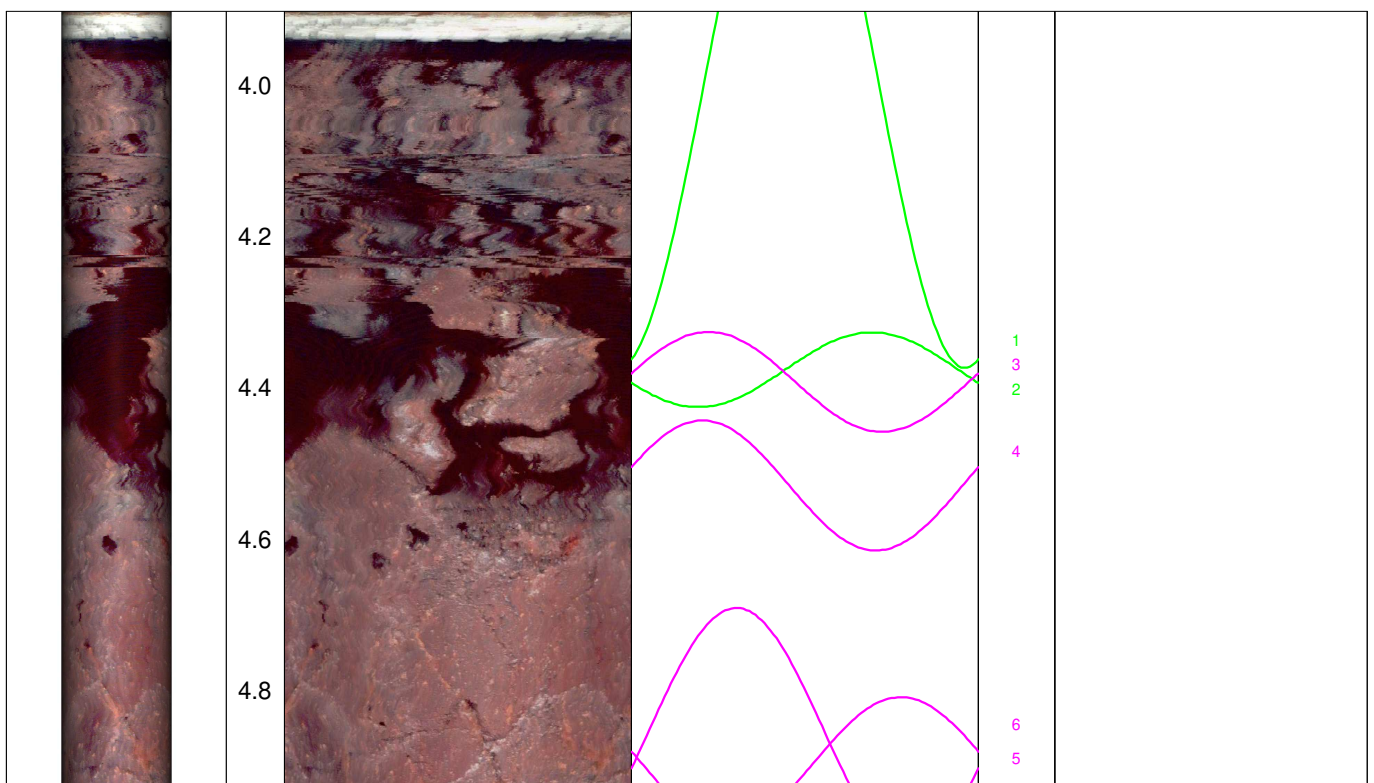
Messbezugspunkt: GOK

Messdatum:	10.03.2026	Bohrlochdurchmesser:	146 mm
Bohrteufe:	25.00 m (lt. BM)	Richtung der Bohrung:	vertikal
Messintervall:	3.92 m - 24.90 m (20.98 m)	Quelldatei:	BK2-26.blk / BK2-26.log
Verrohrung bis:	3.93 m	Messingenieur:	Hr. Üsztöke
Wasserstand:	6.95 m	Bearbeiter:	Fr. Sagmajster

Bemerkungen: Messintervall ETIBS: 3.92 m - 6.95 m (3.03 m)
Messintervall ABF: 6.95 m - 24.90 m (17.95 m)

Trennflächen : schwarz - Schichtung / Schieferung
blau - Schrägschichtung
magenta - Klüfte
grün - Klüfte nur z. T. erkennbar

Pseudokern 	[m]	Bohrlochabwicklung					Trennflächenabwicklung					Nr.	Bemerkung
		N	O	S	W	N	N	O	S	W	N		





5.0

5.2

5.4

5.6

5.8

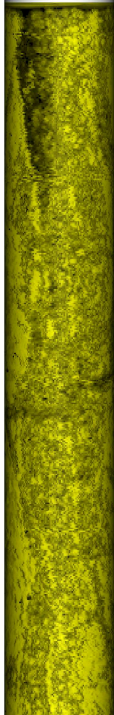
6.0

6.2

6.4

6.6

6.8



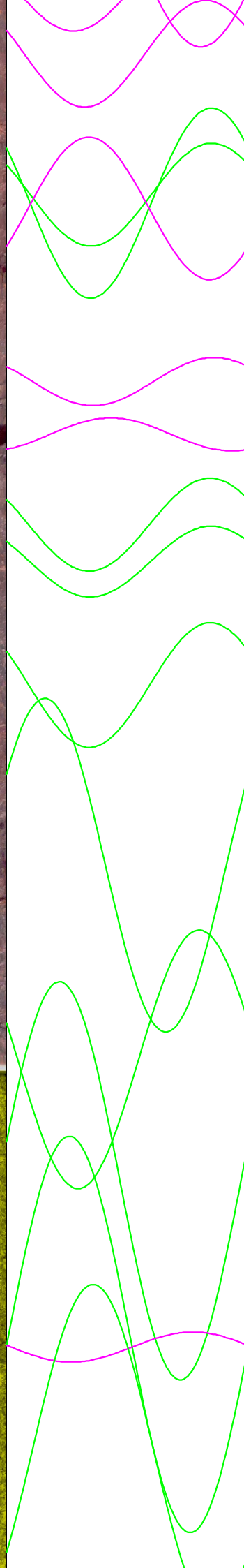
7.0

7.2

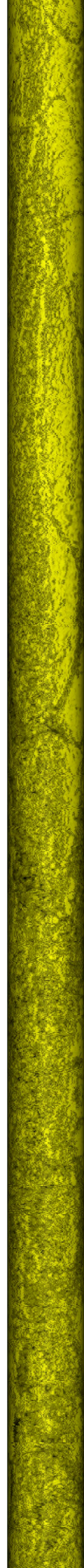
7.4

7.6

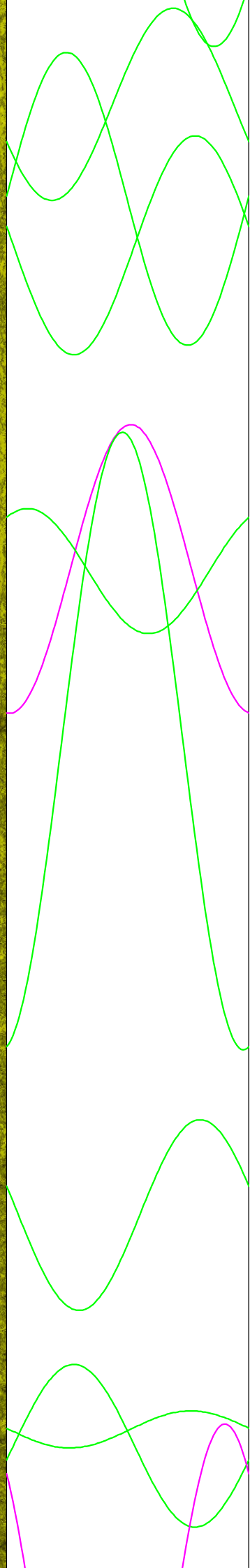
7.8



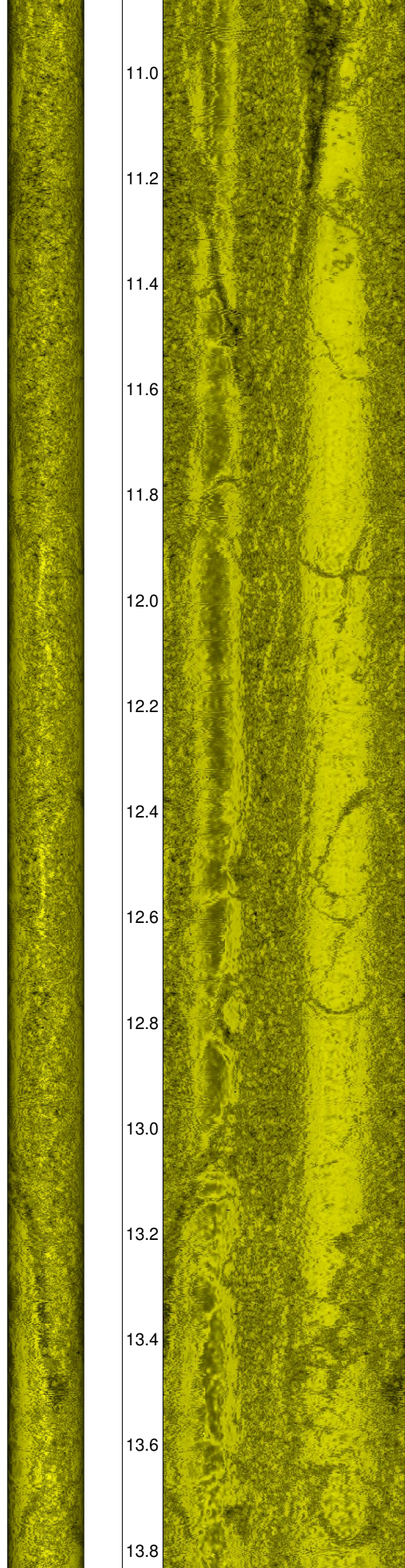
Wasserspiegel



8.0
8.2
8.4
8.6
8.8
9.0
9.2
9.4
9.6
9.8
10.0
10.2
10.4
10.6
10.8



22
23
24
26
25
27
28
29
30
31



11.0

11.2

11.4

11.6

11.8

12.0

12.2

12.4

12.6

12.8

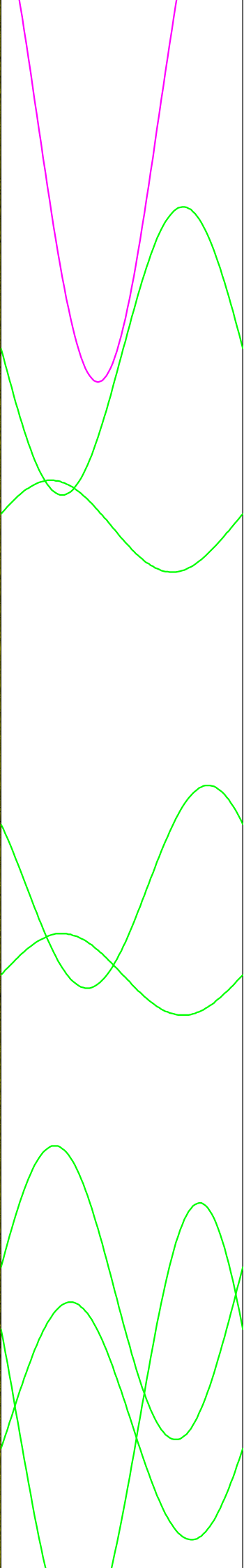
13.0

13.2

13.4

13.6

13.8



32

33

34

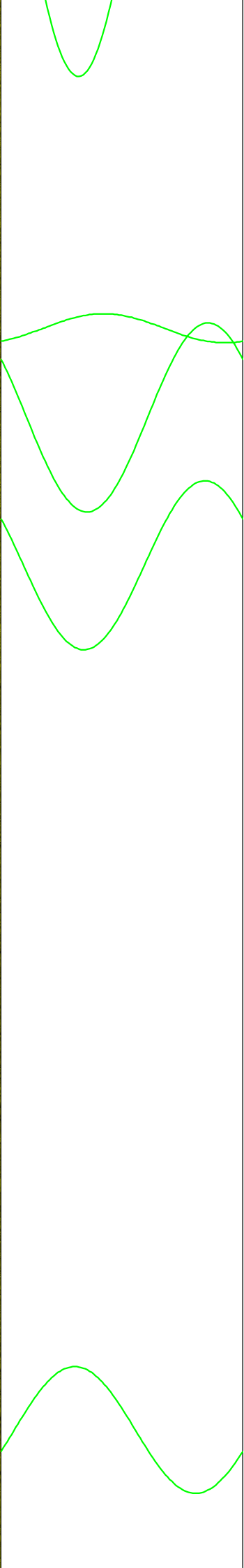
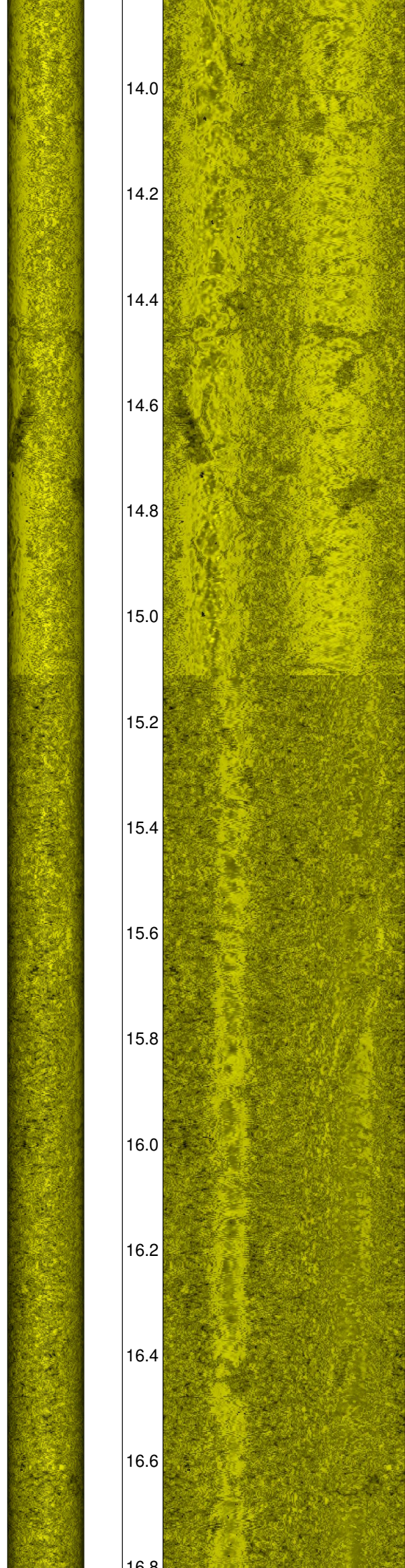
35

36

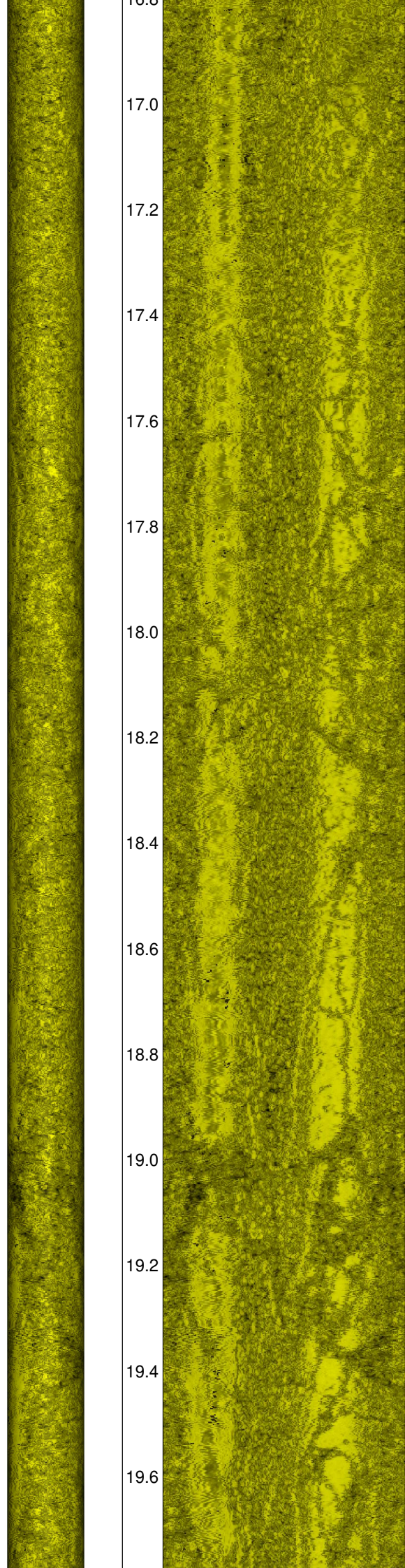
38

37

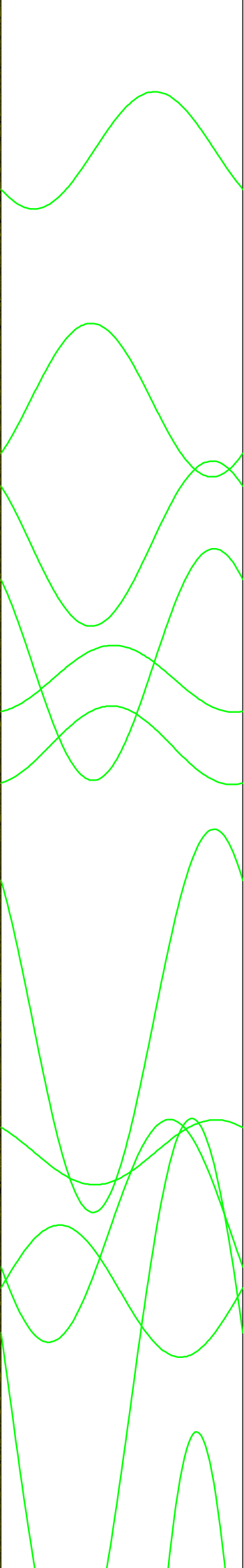
14.0
14.2
14.4
14.6
14.8
15.0
15.2
15.4
15.6
15.8
16.0
16.2
16.4
16.6
16.8



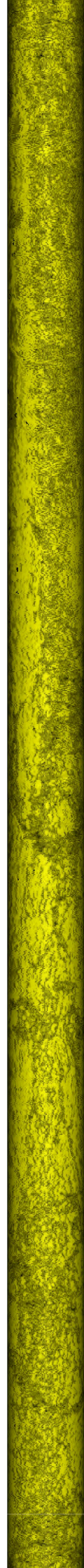
39
40
41
42



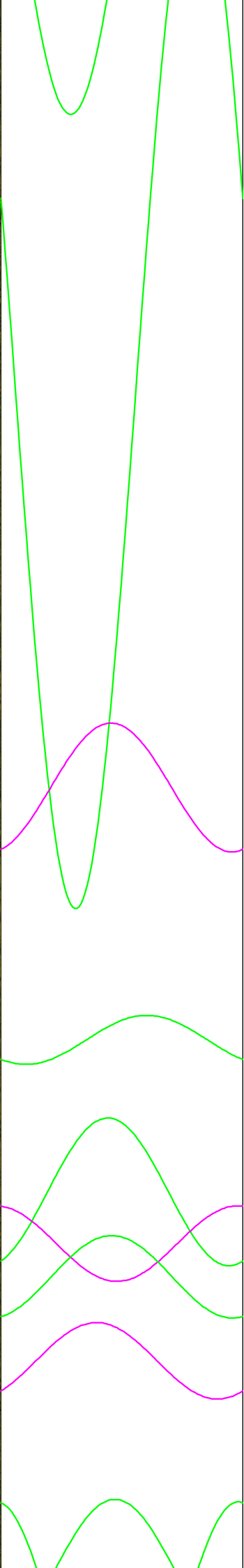
16.0
17.0
17.2
17.4
17.6
17.8
18.0
18.2
18.4
18.6
18.8
19.0
19.2
19.4
19.6



43
44
45
46
47
48
49
50
51
52
53



19.8
20.0
20.2
20.4
20.6
20.8
21.0
21.2
21.4
21.6
21.8
22.0
22.2
22.4
22.6



54
55
56
58
57
59
60
62

22.8

23.0

23.2

23.4

23.6

23.8

24.0

24.2

24.4

24.6

24.8

61

63

64

65

66

67

68

